



Construction Industry Round Table

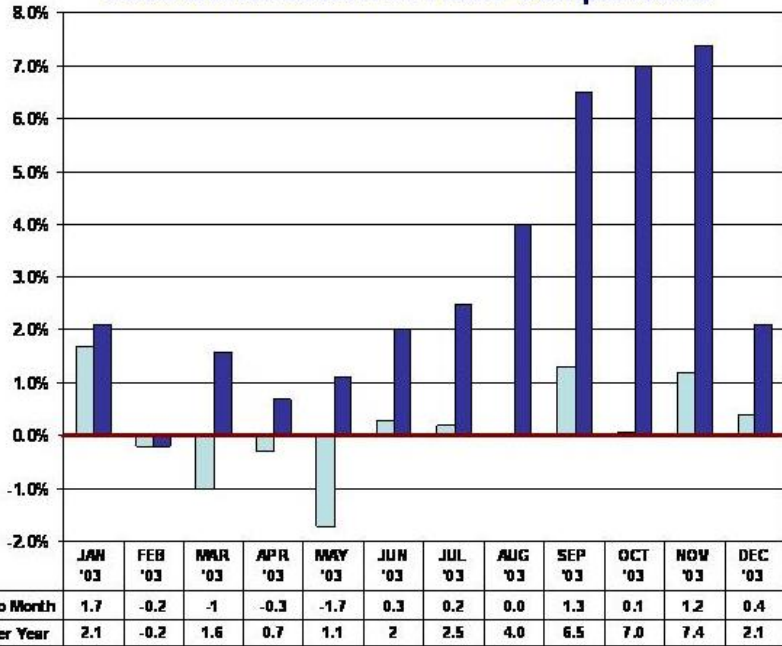
*A force for positive change
in the design / construction industry.*

A Decade Plus of Construction Put in Place

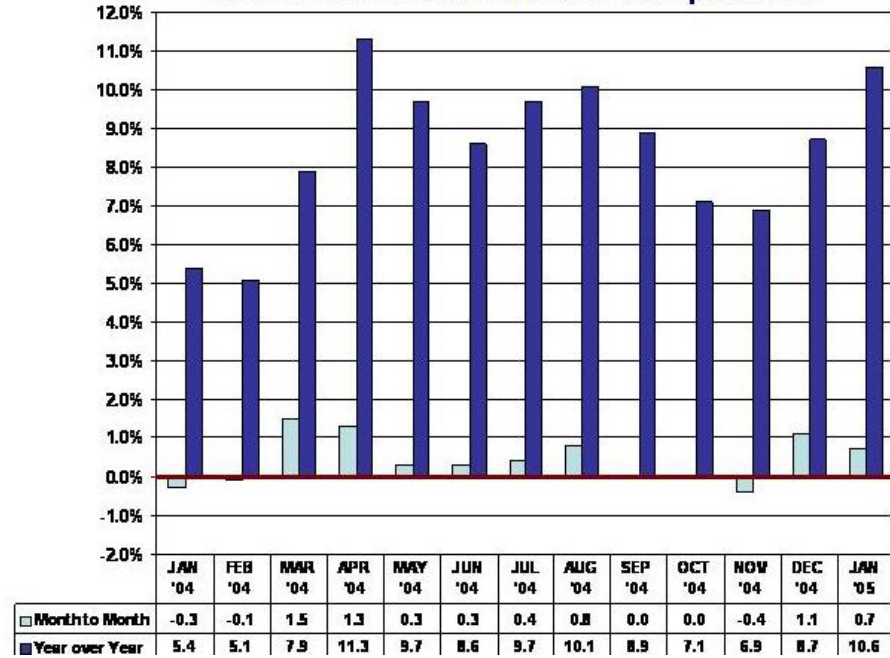
Historical Charts from 2003 - 2014

CIRT has been tracking on a monthly basis since 2003 the Bureau of Labor Statistics' figures for Construction Put in Place. Following are the annual, month-to-month (non-revised) comparison charts for the last ten years.

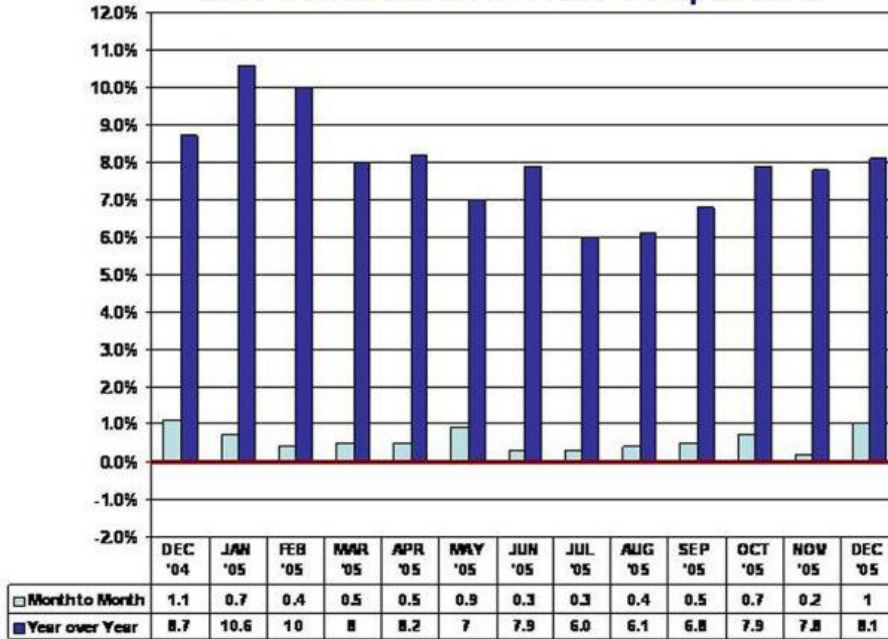
2003 Construction in Place Comparisons



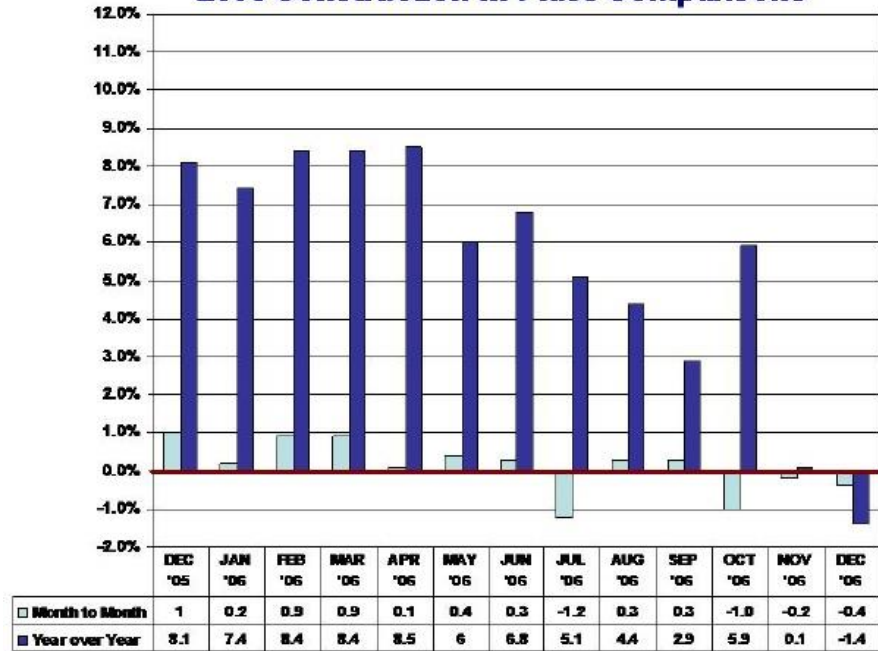
2004 Construction in Place Comparisons



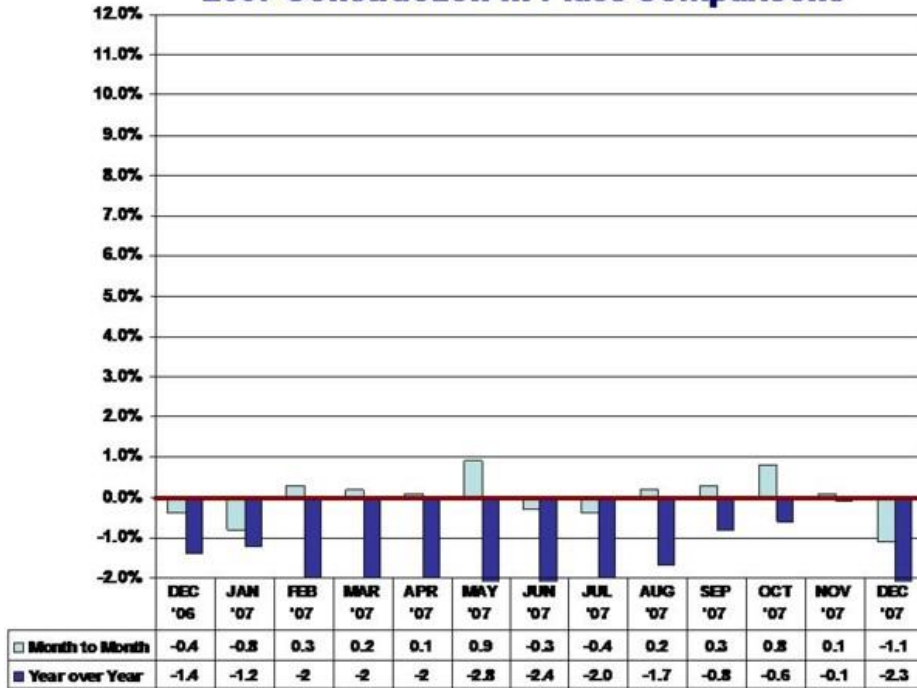
2005 Construction in Place Comparisons



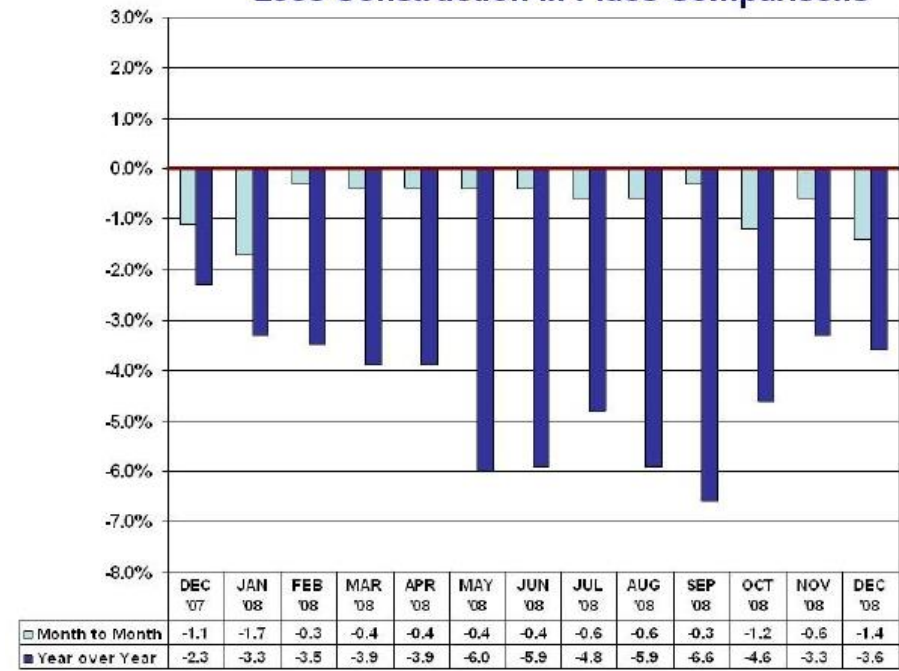
2006 Construction in Place Comparisons



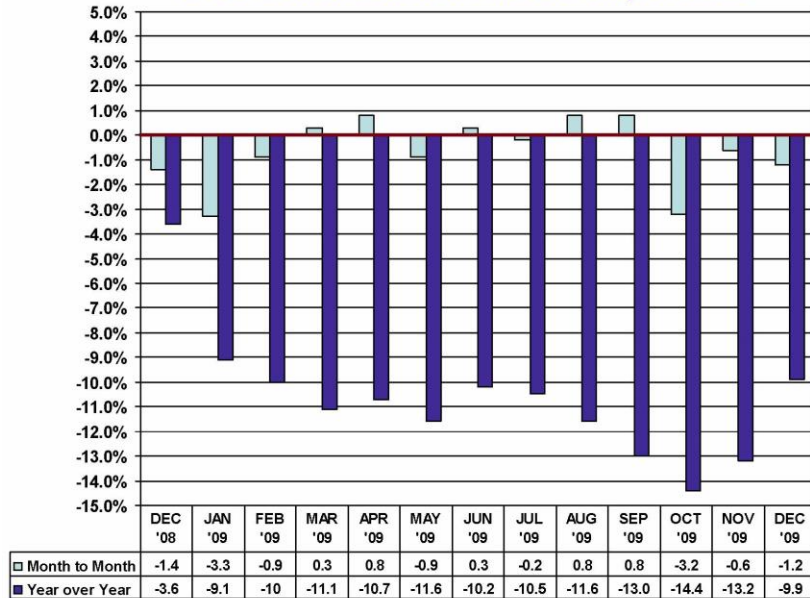
2007 Construction in Place Comparisons



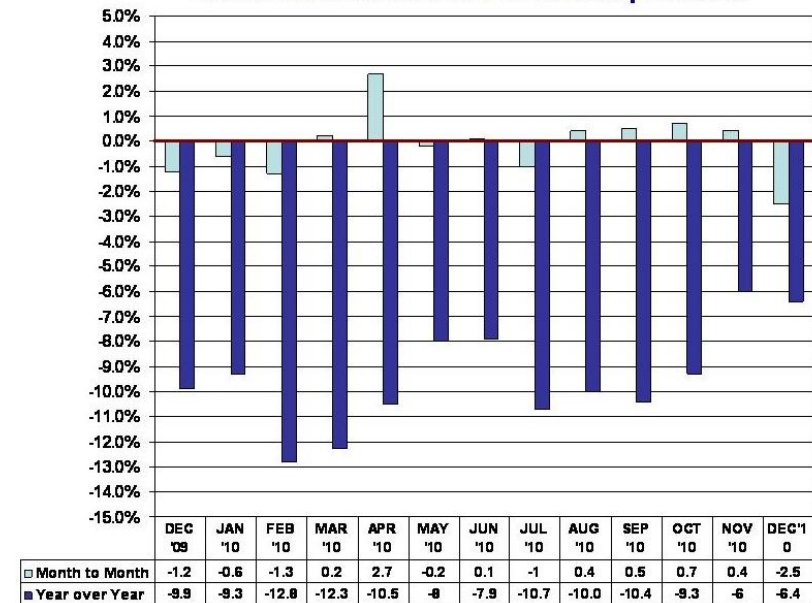
2008 Construction in Place Comparisons



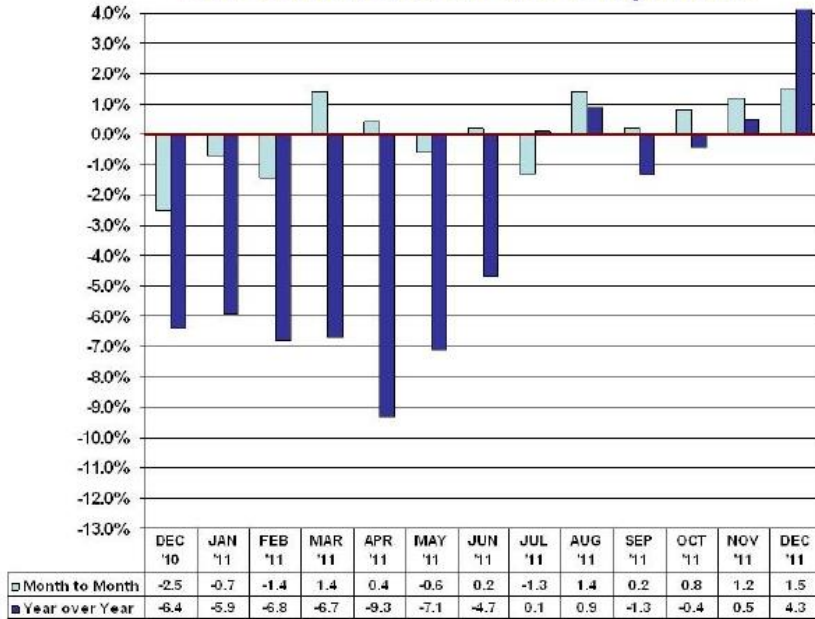
2009 Construction in Place Comparisons



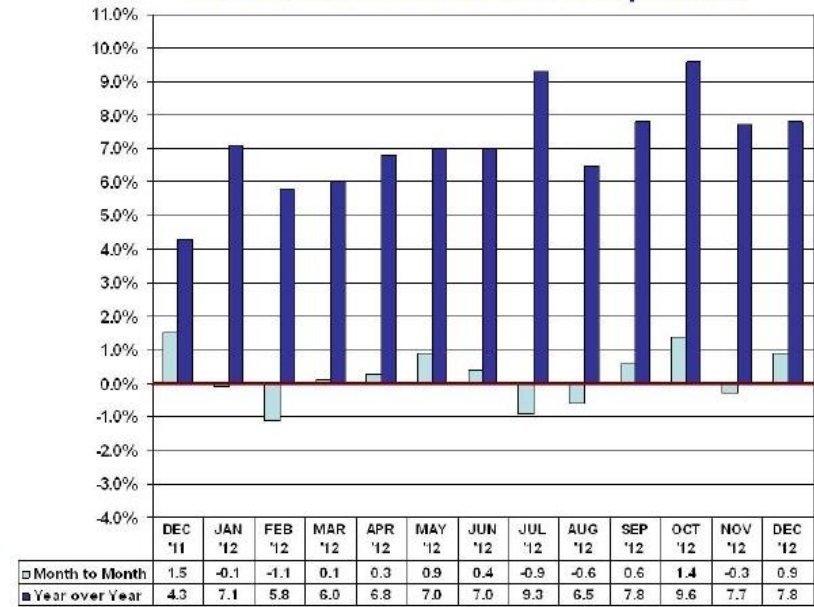
2010 Construction in Place Comparisons



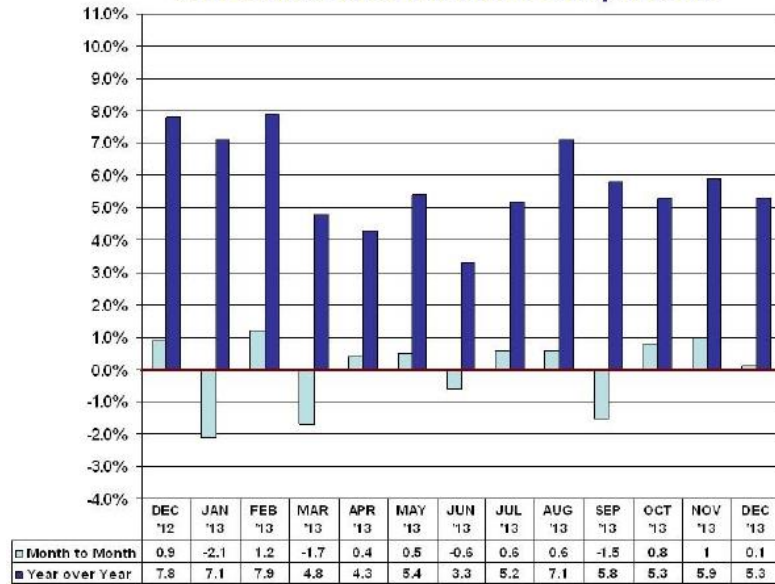
2011 Construction in Place Comparisons



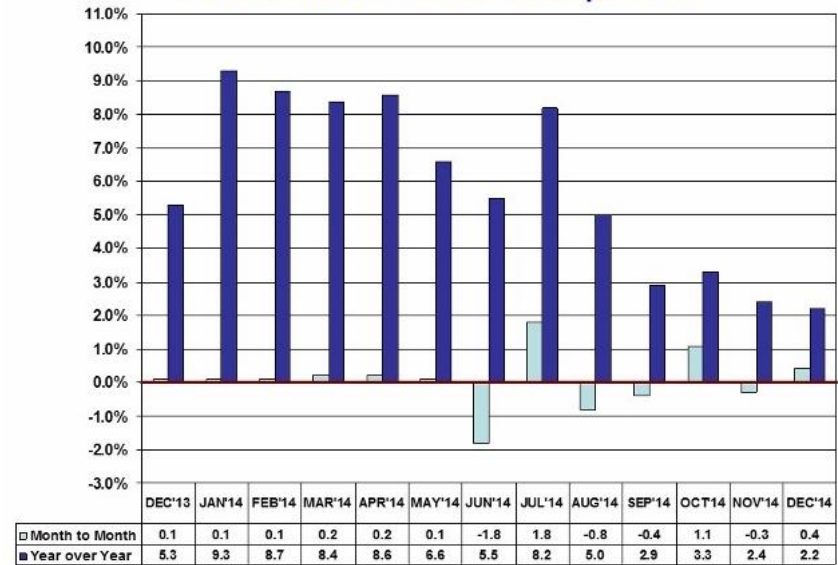
2012 Construction in Place Comparisons



2013 Construction in Place Comparisons



2014 Construction in Place Comparisons





Construction Industry Round Table

If you have any questions about this information, please
contact **Mark A. Casso, Esq., President.**
Email: mcasso@cirt.org; Ph: 202-466-6777.